



Code 7012

Industrial Services Enterprise (ISE)

Manufacturing Support Services

Pre-Solicitation Conference

Presented at:
NUWC Division Newport
Building 80 Gymnasium
17AUG2017

Agenda

- **Introduction/Ground Rules**
- **Disclaimer Statement**
- **Anticipated Procurement Strategy**
- **Facility Overview**
- **Technical Requirements**
- **Conclusion/Wrap-up**
- **DIVNPT Competition and Small Business Overview**

Introduction/Ground Rules

- **Introduction of Participants**
- **Intent of this Pre-Solicitation Conference is to Encourage competition by:**
 - **Providing technical information to provide potential offerors a better understanding of the technical requirements for Prime and Subcontracting opportunities**
 - **Ensure all potential offerors receive, and have access to, the same information**
- **Technical “Q&A” is encouraged**
 - **Q&A will be answered, either today or via SeaPort-e Portal**
 - **Q&A/Feedback Forms**
 - **No questions about incumbent contractor**

Introduction/Ground Rules (cont.)

- All attendees recommended to sign-in (this is voluntary)
- Please silence cell phones and pagers. No personal recording
- Q&A will be recorded, typed, and posted to the SeaPort-e Portal
- The Attendees list will be posted to the SeaPort-e Portal
- This briefing will be posted to the SeaPort-e Portal and the NUWCDIVNPT Electronic Reading Room:
 - <http://www.navsea.navy.mil/Home/Warfare-Centers/NUWC-Newport/Partnerships/Business-Partnerships/Electronic-Reading-Room>

Introduction/Ground Rules (cont.)

- **DO NOT** directly contact the NUWC technical code after today - all further dialogue will be accomplished via the Q&A feature on the SeaPort-e Portal
- Technical requirements contained in this briefing are presented as a summary
 - Full/updated technical requirements will be provided in the Request for Proposal (RFP)

Disclaimer Statement

- Remarks today by Government officials involved in the Code 7012 Industrial Services Enterprise Manufacturing Support Services requirement should not be considered a guarantee of the Government's course of action in proceeding with the acquisition
- The informational briefing shared today reflects current Government intentions and is subject to change based on a variety of circumstances

The formal solicitation, when issued, is the only document that should be relied upon in determining the Government's requirements

Anticipated Procurement Strategy

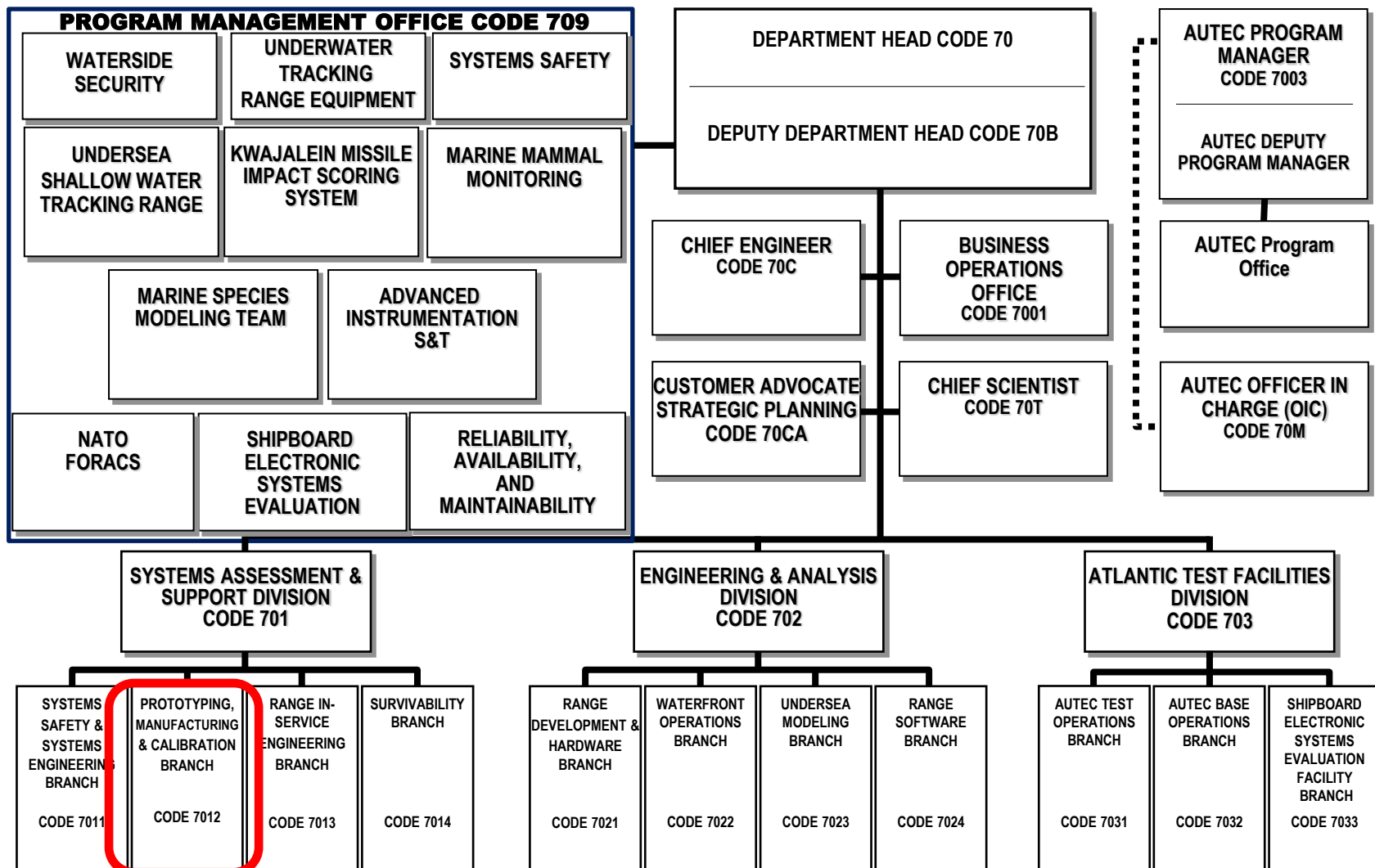
- **This is a follow-on to NUWCDIVNPT N00178-04-D-4136-N412**
 - 3 Offers received
 - SRM (Incumbent)
- **SeaPort-e Task Order, Zone 1, Northeast**
 - Prime
 - Sub
- **Five (5) year Period of Performance**
 - Base year plus 4 one year options
 - Small Business Set Aside
- **Combined Contract LOE: 46,360 Hours 36,480 FF & 9,880 CPFF**
- **Other Direct Costs (ODC's) will be approx. \$6.5M over five years**
- **Clearance Level: Secret**
 - Approximately 5% of tasking
- **Estimated Schedule:**
 - RFP Release: October 2017
 - Proposals Due: 30 days after RFP release
 - Award Date: May 2018

Anticipated Procurement Strategy (cont.)

- **Organizational Conflict of Interest (OCOI) Clause Applies**
- **Work Locations**
 - 98% Government Site, 2% Contractor Site
- **Facilities**
 - Government will provide facilities for on-site personnel
 - Facility Security Clearance Required: Secret (not for storage)
 - Government Furnished Materials/Equipment/Information (GFM/E/I)
 - ❖ Broadly described today for awareness
 - ❖ Provided in Solicitation and upon award of contract
- **Certifications Required**
 - Crane Operators in accordance with NAVFAC P-307
 - Welding in accordance with NAVSEA S9074-AR-GIB-010/278 and T9074-AD-GIB-010/1688

Facility Overview

Ranges, Engineering and Analysis Department



Facility Overview (cont.)

- **The Naval Undersea Warfare Center Division Newport (NUWC DIVNPT), Industrial Services Enterprise (ISE), provides a full ‘Design for Manufacture’ facility including:**
 - Mechanical and Manufacturing Engineering Services
 - Rapid Prototype Development
 - Fabrication and Assembly of Mechanical Components
 - Direct Fleet Support
- **The ISE is a full-service manufacturing and engineering facility for prototyping and production work with dedicated space for engineering, machining, additive manufacturing, painting, powder coating, welding, sheet metal fabrication, assembly and inspection.**
- **The ISE is comprised of over 25,000 square feet of facilities located at NUWC DIVNPT, Newport, RI. ISE tasking includes support of research & development projects, test & evaluation projects, in service production projects, and Fleet Install/De-Install projects.**
- **The ISE is a service provider to both internal and external customers.**

Facility Overview (cont.)

- The ISE operates as a Service Cost Center and typically does not receive any tasking directly from external sponsors. The preponderance of tasking comes from NUWDIVNPT product lines.
- The ISE is in essence a sub-contractor to the performance of tasking the product lines are responsible for to the external sponsors.
- Although the ISE may be tasked to install or repair a piece of test equipment in an R&D facility, (e.g. a firing valve in the Code 40 Advanced Submarine Launch Facility), the ISE does not perform facilities or construction work as this is outside the NUWCDIVNPT mission and falls under the mission of Naval Facilities Command (NAVFAC).
- The overall goal to be achieved by this task order is to retain contractor services to operate and maintain the machinery and processes of the ISE to execute the day to day production of finished goods.



Facility Overview (cont.)

INCIDENTAL GOVERNMENT PROPERTY AVAILABLE

All equipment, machinery, tooling, measuring instruments, materials handling and storage devices located within the ISE to include but not limited to:

OMAX 60120 water jet

HAAS VF2, VF3, VF5, VF7, VF9, HS6R and Leblonde Machino FNC 106 milling centers

Bridgeport milling machines with 2-axis ProtoTrak controls (Qty 8)

Devlieb 3B-48 Horizontal miller

HAAS SL30 (Qty 2), SL40 and Hardinge Conquest T-42 turning centers

HAAS TL-1 (Qty 2) tool room lathes

Monarch EE tool maker lathes (Qty 3)

American 33x120 and Monarch 610 engine lathes

Bullard 46" Model 75 Cut Master VTL

Horizontal and Vertical band saws

Tool and Surface grinders

New Hermes IS-400 engraver and Bren stencil cutter

Empire PF6060 media blast cabinet

Powder Coat oven and spray booth

Paint spray booth

Niagra HD-175-8-10 and LVD 35BH/04 press brakes

Wysong 6' shear

Strip It Super 30/30 punch

Webb 6'x1/2" power roller

Lincoln, Miller and ESAB stick, MIG & TIG welding machines and plasma cutters

1000 square foot tool room

BUILDING FOOTPRINT

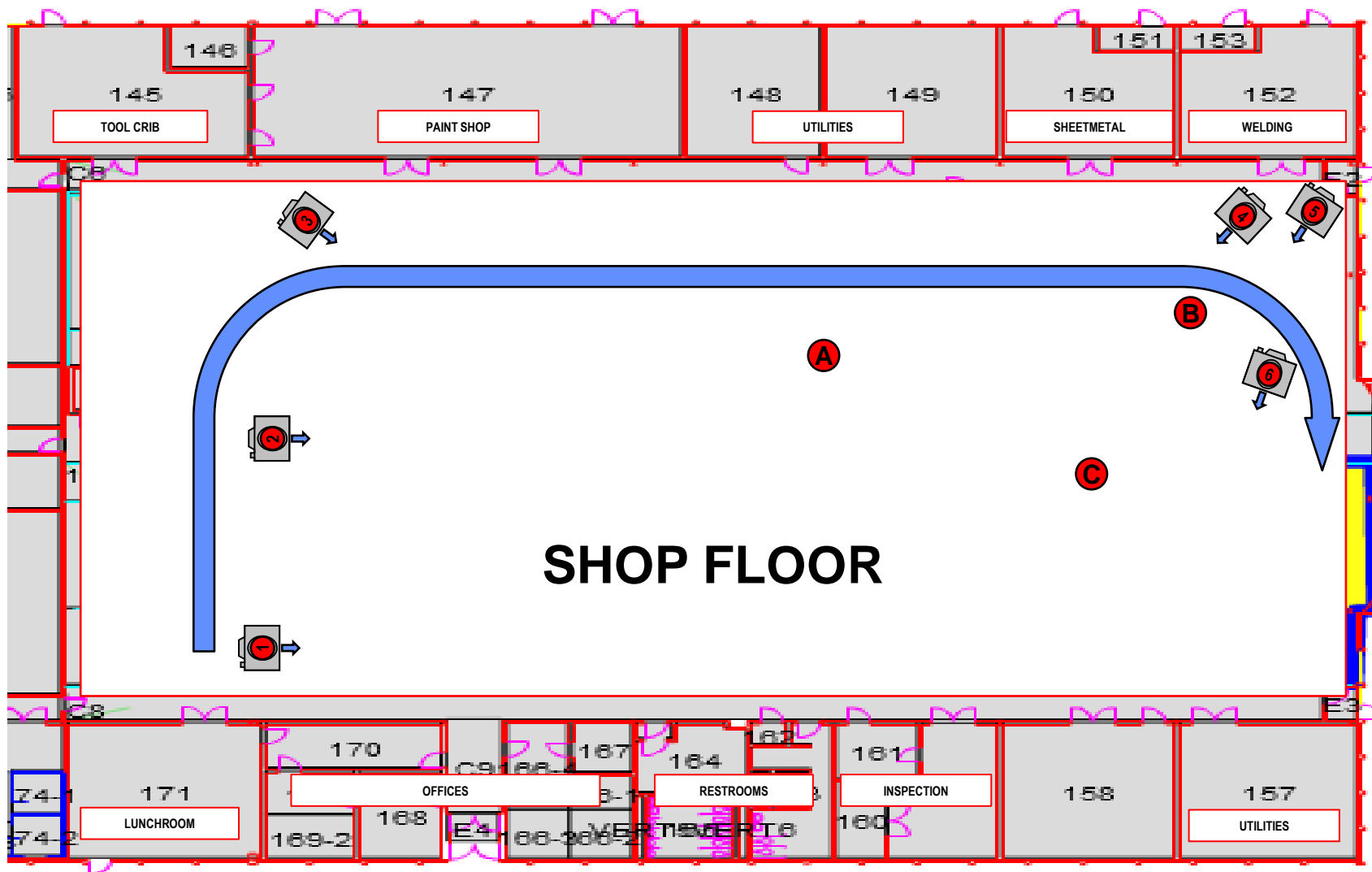
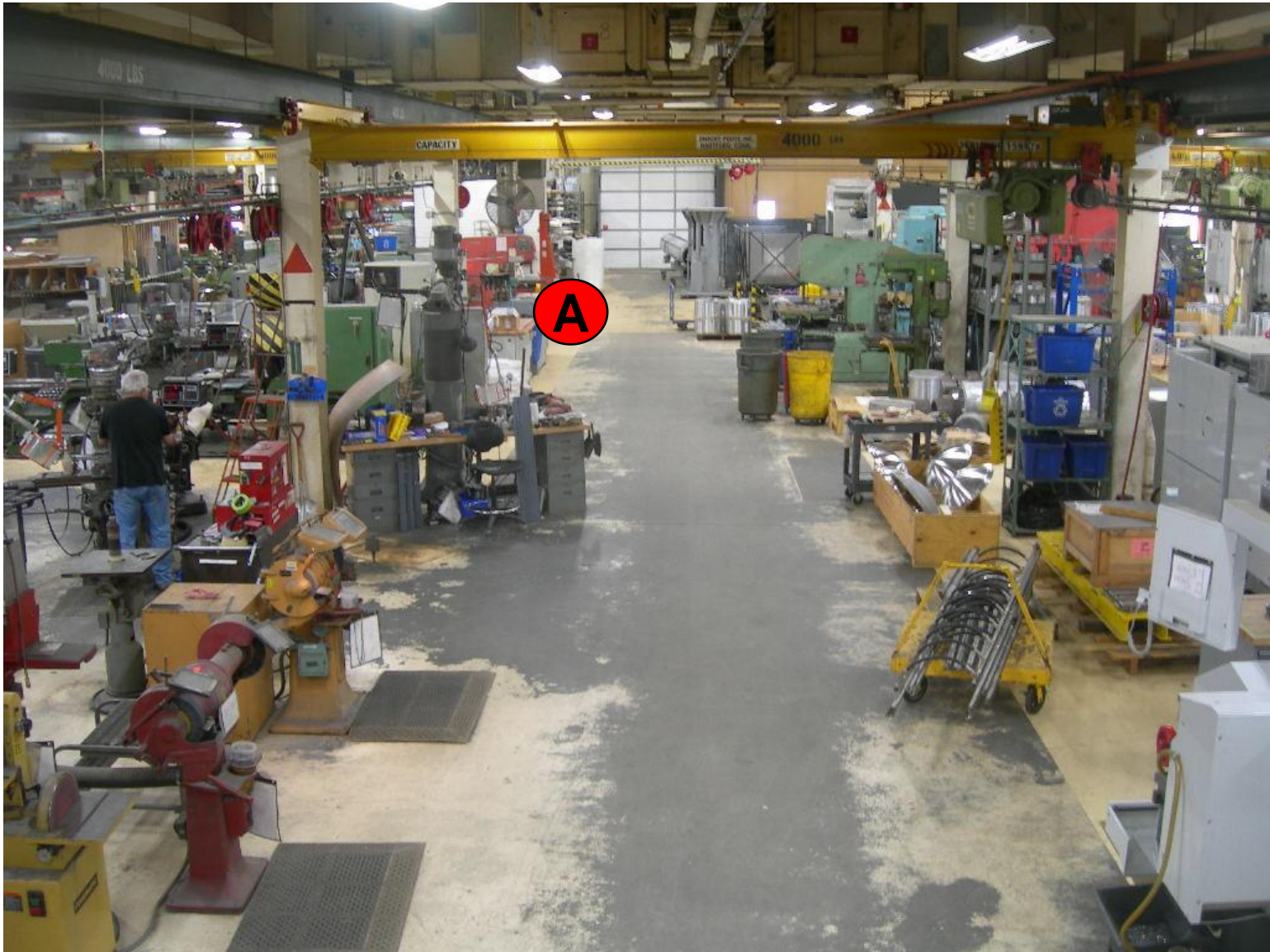


PHOTO 1



Distribution A, unclassified, approved for public release. Distribution unlimited and is exempt from U.S. export licensing and other export approvals under the International Traffic in Arms Regulation.

PHOTO 2



Distribution A, unclassified, approved for public release. Distribution unlimited and is exempt from U.S. export licensing and other export approvals under the International Traffic in Arms Regulation.

PHOTO 3



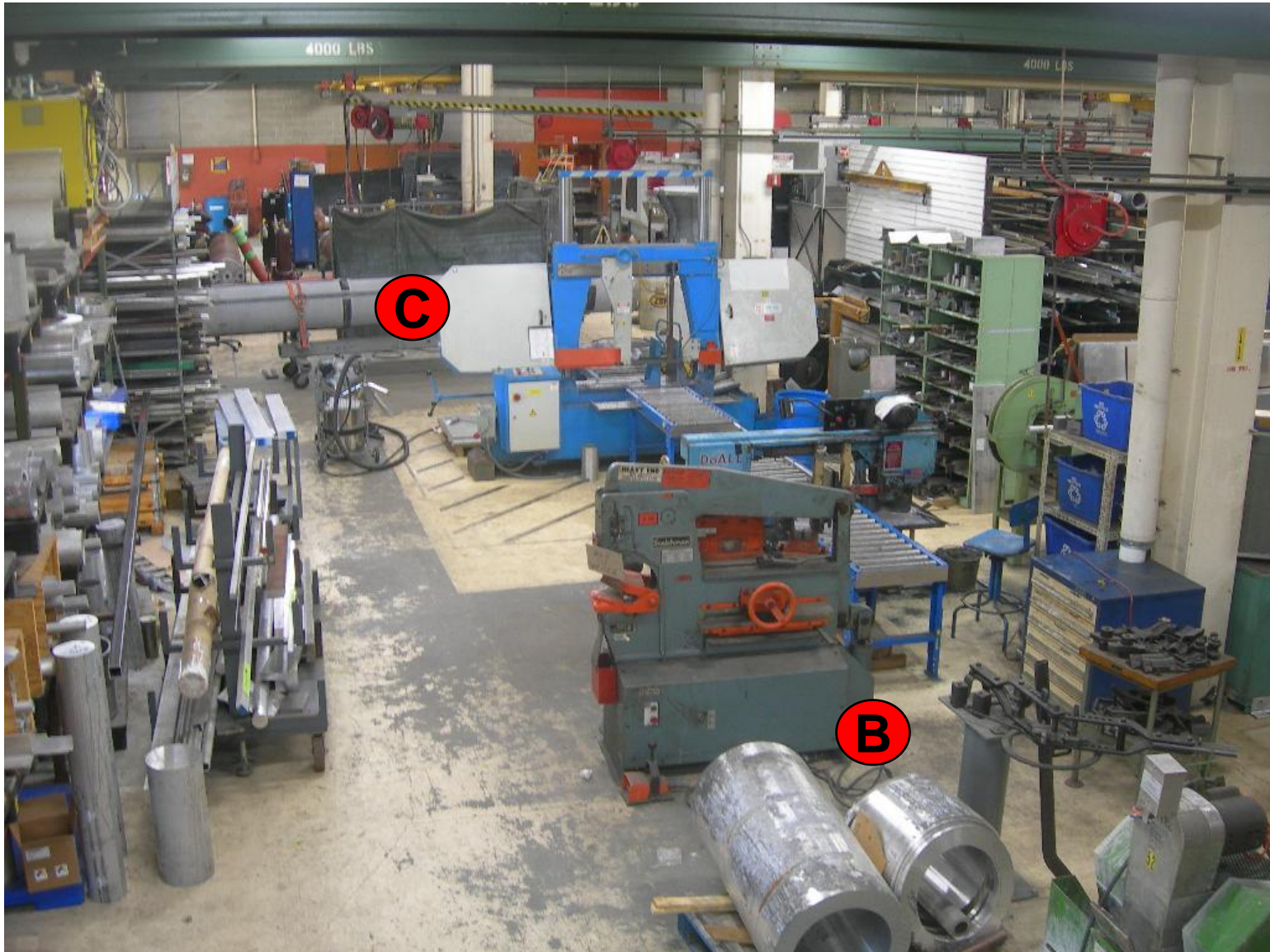
Distribution A, unclassified, approved for public release. Distribution unlimited and is exempt from U.S. export licensing and other export approvals under the International Traffic in Arms Regulation.

PHOTO 4



Distribution A, unclassified, approved for public release. Distribution unlimited and is exempt from U.S. export licensing and other export approvals under the International Traffic in Arms Regulation.

PHOTO 5



Distribution A, unclassified, approved for public release. Distribution unlimited and is exempt from U.S. export licensing and other export approvals under the International Traffic in Arms Regulation.

PHOTO 6



Distribution A, unclassified, approved for public release. Distribution unlimited and is exempt from U.S. export licensing and other export approvals under the International Traffic in Arms Regulation.

Technical Requirements

- **Service Contract**
- **Provide qualified staffing to produce widgets from Government Furnished Information using Government Furnished Equipment**
- **Procure as identified emergent materials in support of widget production via ODC's**
- **Maintain the physical plant and machine tools in good working order**

Technical Requirements (cont.)

Task 1 MACHINING 60%: Use ISE machines provided as Incidental Government Property (IGP) to perform:

- 1) Lay-out and manufacture of parts/assemblies of metals, composites, ceramics, plastics, and other materials from drawings or samples.**
- 2) Vertical and horizontal turning.**
- 3) Taper turning.**
- 4) Vertical boring.**
- 5) Horizontal, vertical, and universal knee type milling.**
- 6) Slotting and planeing.**
- 7) Drilling, reaming, and honing.**
- 8) Surface, cylindrical and universal grinding.**
- 9) Cut-off sawing.**
- 10) Removal of broken taps and studs.**
- 11) Precision measurement and comparison.**
- 12) Cutting bevel, worm, and helical gears and power screws.**
- 13) Grinding and sharpening of bits, cutters and tools used to machine components.**
- 14) Manufacturing of composition gaskets and seals for mechanical assemblies.**
- 15) Fitting and installation of roller and ball bearings.**
- 16) Removal of deteriorated gaskets and seals, clean surfaces and replace.**

Technical Requirements (cont.)

Task 2 SHEETMETAL 5%: Use ISE machines provided as IGP to perform:

- 1) Flat pattern lay-out and templating.**
- 2) Fabrication operations such as drilling, nibbling, notching, forming, punching, and shearing on aluminum, corrosion resistant steel, galvanized steel, mild steel and other sheet materials.**
- 3) Manual bending, power bending, and rolling.**

Task 3 ENGRAVING 2%: Use ISE machines provided as IGP to:

- 1) Engrave metal, plastic, and other material panels and nametags using computer engraving.**
- 2) Engrave metal, plastic, and other material 360-degree dials on face using computer engraving.**
- 3) Grind and sharpen bits, cutters and tools used to engrave components.**

Technical Requirements (cont.)

Task 4 WELDING & BRAZING 15%: Use ISE machines provided as IGP to:

- 1) Weld ferrous and non-ferrous material using shielded metal arc, gas tungsten arc welding, MIG, TIG, and other welding equipment and processes as appropriate.**
- 2) Pre-heat and post heat weld joints.**
- 3) Build-up of worn or damaged surfaces with weld.**
- 4) Prepare joints for welding by hand grinding and burning.**
- 5) Solder, spot welding, and gas tungsten arc welding.**
- 6) Prepare and mechanically fit-up pipe joints and make ready for brazing or welding.**

Task 5 WELDING SURVEILLANCE 2%: Perform surveillance functions related to welding:

- 1) Visual inspections including optical magnification.**
- 2) Magnetic particle.**
- 3) Ultrasonic.**
- 4) Liquid penetrant.**
- 5) Re-qualification and certification of welding and brazing personnel.**

Technical Requirements (cont.)

Task 6 PAINTING & POWDER COATING 10%: Use ISE machines provided as IGP to:

- 1) Operate the conventional liquid spray booth per the operating instructions and applicable environmental regulations.**
- 2) Operate the powder coating facility per the operating instructions and applicable environmental regulations.**
- 3) Preserve, paint and/or coat projects in accordance with required specifications.**
- 4) Conduct surface preparation and painting/coating in accordance with required specifications.**

Task 7 MATERIALS HANDLING 5%: Use ISE cranes, pallet trucks, and forklifts (IGP) to:

- 1) Remove, lift, transport, and place material and heavy equipment to/from delivery trucks, storage racks, manual, and CNC machines.**
- 2) Perform visual pre-test inspection of weight lifting or weight bearing items for obvious faults or defects.**
- 3) Perform weight testing.**

Technical Requirements (cont.)

Task 8 MAINTENANCE&REPAIR 1%: Maintain the ISE physical plant by:

- 1) Performing preventive maintenance on equipment, machinery, and portable tools.**
- 2) Performing minor corrective maintenance on equipment, machinery, and portable tools.**
- 3) Performing major maintenance on selected equipment, machinery, and portable tools.**
- 4) Returning all hazardous materials to storage at the end of each shift.**
- 5) Returning all tooling to storage at the end of each task.**
- 6) Maintaining all designated isle ways clear of materials by moving materials to designated staging areas as soon as is practical.**
- 7) Deep cleaning all industrial spaces and lay-down areas to remove industrial debris weekly.**

Conclusion/Wrap-up

- **Thank you for your interest in the Code 7012 Industrial Services Enterprise Manufacturing Support Services requirement**
- **The attendees list will be posted to the SeaPort-e Portal**
- **This briefing will be posted to the SeaPort-e Portal and the NUWCDIVNPT Electronic Reading Room**
- **“Q&A” (today’s and any subsequent) will be posted to the SeaPort-e Portal**
- **DO NOT contact today’s presenters**
 - **All further dialogue will be accomplished via the Q&A feature on the SeaPort-e Portal**