



Command Overview

Presented to:

INDUSTRY DAY

Presented by:

Chris Savage

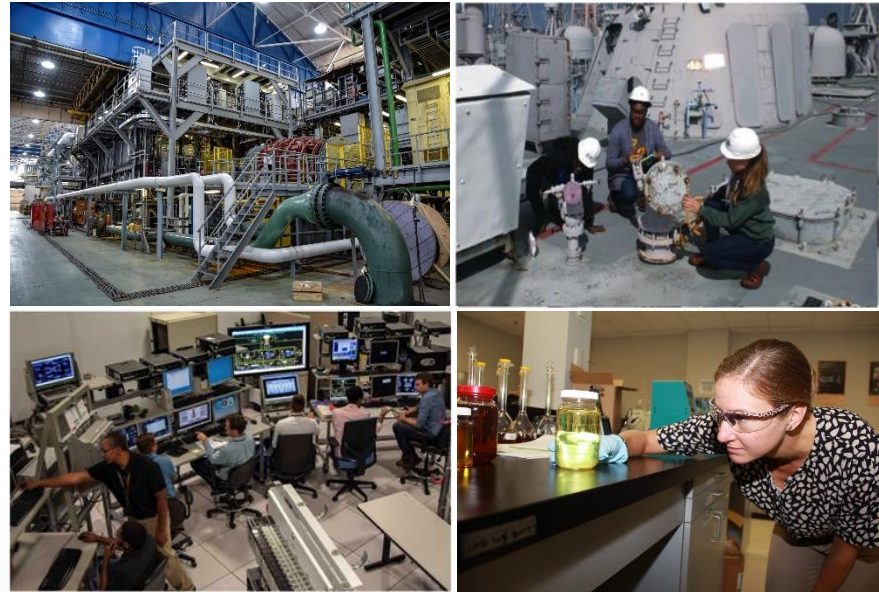
Naval Surface Warfare Center Philadelphia Division

21 October 2020

DISTRIBUTION A: Approved for public release: distribution unlimited.

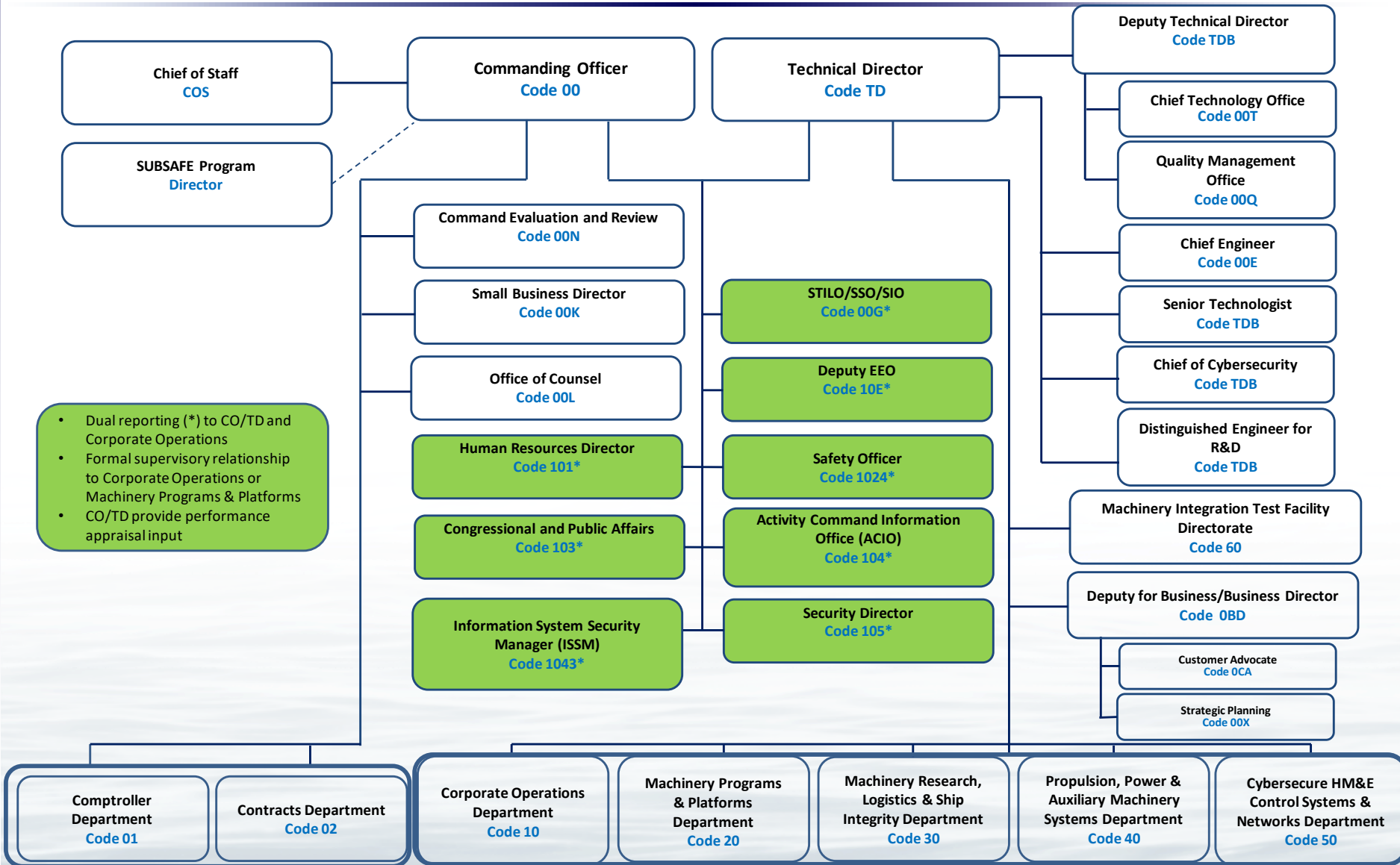
Powering Today's Fleet, Empowering Tomorrow's

NSWC Philadelphia Division's Mission is to provide research, development, test and evaluation, acquisition support, engineering, systems integration, in-service engineering and fleet support with Cybersecurity, comprehensive logistics, and life-cycle savings through commonality for surface and undersea vehicle machinery, ship systems, equipment and material.





NSWC Philadelphia Division Organizational Chart

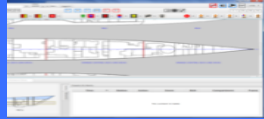


DISTRIBUTION A: Approved for public release: distribution unlimited.



NSWCPD Capabilities Expanding the Advantage

OTD of Ships/Subs *Warfighting Capability* *Cybersecurity* *Affordability* *HVL* *People*



Chief Technology Officer

- Naval Innovative Science and Engineering Program (NISE 219)
- Patents/Intellectual Property
- Educational Partnership Agreements
- Naval Engineering Education Consortium (NEEC)



Machinery Programs & Platforms

- **Affordability & Life Cycle Planning**
- **Modernization Installation Planning & Execution**
- Surface Ship, Aircraft Carrier, Submarine Systems Integration



Machinery Research, Logistics & Ship Integrity

- **Advanced Machinery R&D**
- **Logistics Engineering Readiness**
- **Materials & Environmental Systems**
- **Systems Hardening and Damage Control**



Chief Engineer (CHENG)

- **Technical Authority**
- **Technical Integrity**
- **Technical Competencies**
- **System Engineering**
- **Risk Assessment**



Cyber-Secure HM&E Control Systems & Cybersecurity Networks

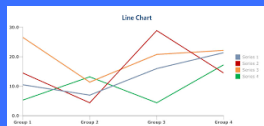
- HM&E Networks & Cybersecurity
- Instrumentation & Monitoring
- Electronic Damage Control Plotting
- Navigation & Integrated Bridge Systems
- Machinery/Auxiliary, Ship Control Systems Cyber-Secure Labs



Propulsion, Power & Auxiliary Machinery

- **Mech Power & Propulsion**
- **Auxiliary Machinery/Submarine Life Support Systems**
- **Electrical Power & Distribution**
- **Hull & Deck Machinery & Outfitting**

Survivable, cyber-secure, affordable surface ship, aircraft carrier, and submarine machinery systems throughout their lifecycle – S&T, R&D, T&E, acquisition, ISE, and ILS.



Comptroller

- **Budget Execution**
- **Funds Management**
- **FIAR (Audit Readiness)**
- **Travel & Payroll Services**
- **Financial Reporting**



Contracts

- **Acquisition Policy and Compliance**
- **Strategic Sourcing**
- **Contract Fraud Mitigation**
- **Small Business Program**
- **Industry Outreach**



Corporate Operations

- Infrastructure, Environmental Compliance, Occupational Safety & Handling
- **Ashore Cybersecurity**
- **Info Management/Info Technology (IM/IT)**
- **Physical, Personnel, Information, ATPF, Industrial Security**
- **Data Analytics & Corporate Metrics**
- **Human Capital Capacity & Competency**



Talent Management & Organizational Development

- **STEM Outreach Program**
- **NREIP / SEAP**
- **Digital Recruiting Program**
- **Talent Manager Dashboard**
- **Branch Manager Forums**
- **Employee Resource Groups**

DISTRIBUTION A: Approved for public release: distribution unlimited.



NSWCPD Labs & Test Sites

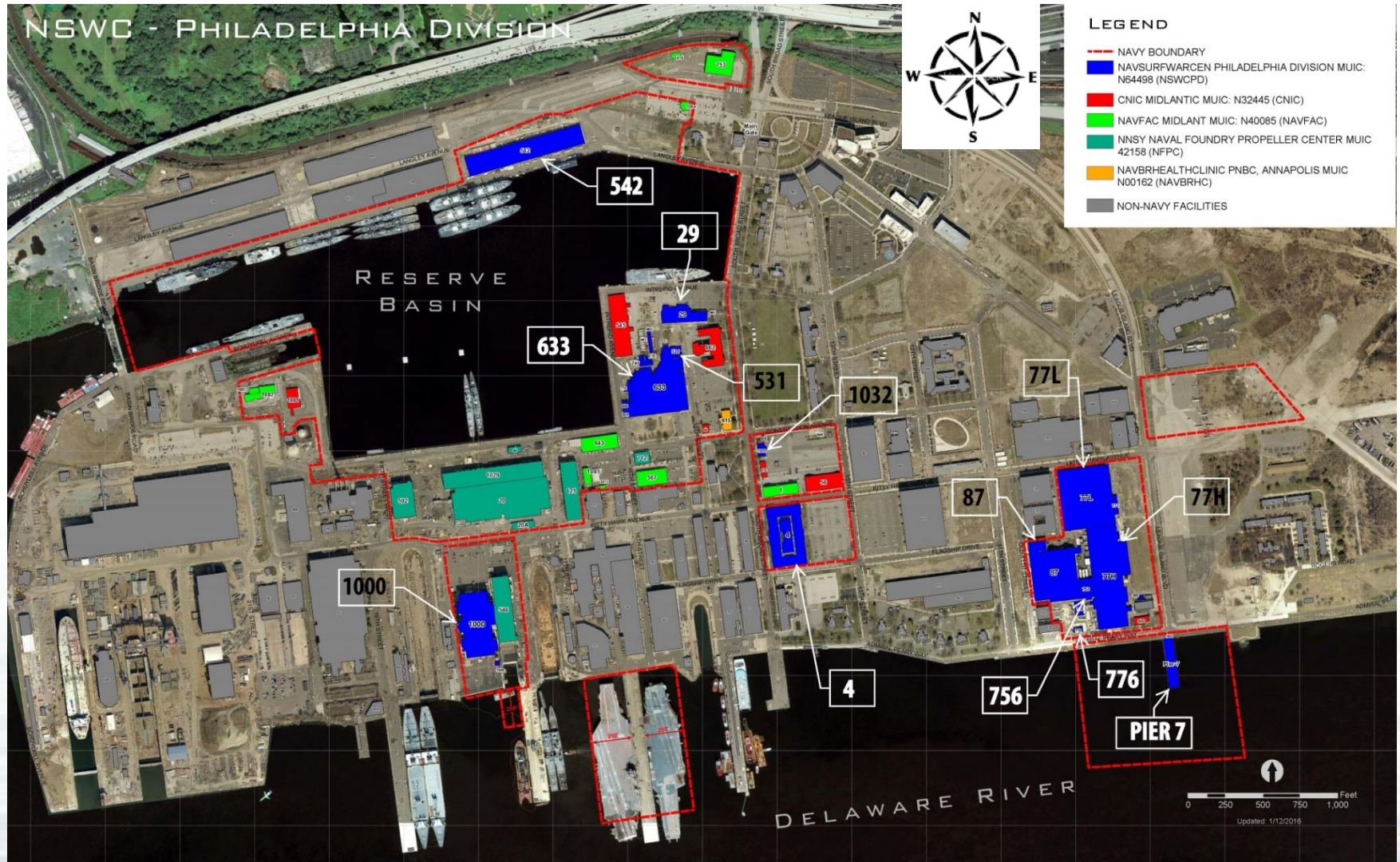
- Auxiliary & Life Support Systems Complex
- Propulsion & Electrical Machinery Systems Complex
- Environmental & Damage Control Systems & Materials Technology Complex
- Machinery Network, Sensors & Data Systems Complex
- Cargo, Weapons Handling & Hull Systems Complex
- Undersea Vehicle Sail & Deployed Systems Complex



DISTRIBUTION A: Approved for public release: distribution unlimited.



The Navy Yard Map



DISTRIBUTION A: Approved for public release: distribution unlimited.



Questions?