

Camping Equipment

<u>Item</u>	<u>Daily</u>	<u>Weekend</u>	<u>Weekly</u>
Pop-up Camper	\$50	\$100	\$250
Hikers Backpack	\$2	\$4	\$10
Propane Stove	\$2	\$4	\$10
Three-Person Tent	\$4	\$8	\$20
Six-Person Tent	\$8	\$16	\$40
Cooler	\$5	\$10	\$25
Five-Gallon Water Jug	\$2	\$4	\$10
Ten-Gallon Water Jug	\$4	\$8	\$20



Outdoor Party Equipment

<u>Item</u>	<u>Daily</u>	<u>Weekend</u>	<u>Weekly</u>
10x10 Canopy	\$20	\$40	\$85
15x15 Canopy	\$30	\$50	\$150
20x20 Canopy	\$55	\$100	\$225
20x40 Canopy	\$75	\$125	\$325
Side Canopy	\$15	\$25	\$55
Folding Chair	\$1	\$2	\$10
30"x72" Table	\$4	\$8	\$20
Six Chairs & Table Set	\$8	\$16	\$40
Large Grill	\$25	\$35	\$85
Horseshoe Set	\$2	\$4	\$10



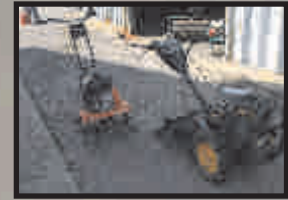
Boating Equipment

<u>Item</u>	<u>Daily</u>	<u>Weekend</u>	<u>Weekly</u>
17' Parker Boat	\$95	\$190	\$475
18' Parker Boat	\$115	\$230	\$575
17' McKee Craft	\$100	\$200	\$500
18' McKee Craft	\$125	\$250	\$600
Hydra-Sports	\$125	\$225	\$425
17' Tracker Pan Fish	\$50	\$90	\$200
16.5' Tracker	\$75	\$175	\$375
16' Alumacraft	\$50	\$90	\$200
Jet Ski	\$150	\$300	N/A
Extra Life Jacket	\$2	\$4	\$10
Canoe	\$8	\$16	\$40
Single Kayak	\$6	\$12	\$30
Double Kayak	\$8	\$16	\$40
Small Canoe/Kayak Trailer (rent 4 & get trailer free)			
Large Canoe Trailer (rent 5 or more & get trailer free)			



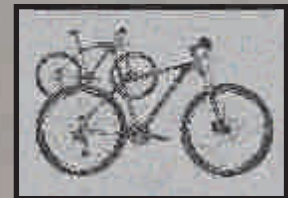
Lawn Equipment

<u>Item</u>	<u>Daily</u>	<u>Weekend</u>	<u>Weekly</u>
Aerator (pull behind)	\$15	\$25	N/A
Aerator Gas	\$45	\$80	N/A
Push Lawn Mower	\$15	\$30	N/A
Small Gas Tiller	\$25	\$45	N/A
Large Gas Tiller	\$35	\$60	N/A
Log Splitter	\$50	\$100	\$250



Miscellaneous

<u>Item</u>	<u>Daily</u>	<u>Weekend</u>	<u>Weekly</u>
3.6 to 7.55KW Generator	\$25	\$50	\$100
Pressure Washer	\$25	\$45	N/A
Box Trailer (5'x8')	\$25	\$50	\$125
Open Trailer	\$20	\$40	\$100
Bikes	\$10	\$20	\$50
Segway	\$25	\$50	N/A
Dunk Tank	\$50	\$100	N/A
Moon Bouncy	\$75	\$150	N/A



Not all items are available at both locations.
Please call ahead to confirm inventory.

PORTSMOUTH OUTDOOR RENTALS

1. **Mission:** MWR Outdoor Rental Centers are operated for the purpose of providing leisure time activities which will effectively contribute to the mental and physical well-being of naval personnel and their family members.

2. **Location:** Portsmouth Outdoor Rental Centers are located at Scott Center Annex, Bldg. 343 or Naval Medical Center, Bldg. 276.

3. **Authorized Patrons:** Active duty, retirees, reservists and their family members (18 years and older with written consent, in person prior to issue) and DoD civilians.

4. **Reservations and Issue Procedures:**

a. Reservations are made at Scott Center Annex, Bldg. 343 or Naval Medical Center, Bldg. 276 up to 30 days in advance of the desired date. All reservations must be paid in person and paid in full.

b. Only authorized patrons with a valid ID card may sign for equipment received.

c. All patrons are required to pass a written water safety test in order to rent boating equipment.

d. All items must be picked up prior to 4 p.m. on the day of reservation. Weekend rental begins at 9 a.m. on Friday and ends at noon Monday. A daily usage fee will be charged on items returned after noon.

e. Any cancellations must be made seven days prior to the rental date in order to receive a full refund.

f. All items must be cleaned prior to returning or a cleaning fee will be assessed as follows: large items \$50, small items \$20.

g. All equipment shall be inspected upon its return by a representative of Portsmouth Outdoor Rental Centers, and the patron will be charged for any damages resulting from other than normal use.

5. **Responsibility:** Patrons are personally responsible for all boats, motors and related equipment which they have checked out. MWR assumes no responsibility or liability once items have been removed from the premises, and the patron is responsible for any insurance coverage which may be necessary.

6. **Fees and Charges:** Minimum fees and charges will be made as may be necessary to support the operation of Portsmouth Outdoor Rental Centers.

SCOTT CENTER ANNEX

Bldg. 343 • 396-7442

Hours of Operation

Monday through Friday

8 a.m. to 4:30 a.m.

Closed Saturday, Sunday & Holidays

NSAHR HOSPITAL ANNEX

Bldg. 276 • 953-5855

Winter Hours of Operation

Monday through Friday

8 a.m. to 4 p.m.

Closed Saturday, Sunday & Holidays

Summer Hours of Operation

Monday, Tuesday, Thursday, Friday

10 a.m. to 6 p.m.

Saturday

8:30 a.m. to noon

Sunday

1:30 to 5 p.m.

Closed Wednesdays & Holiday Weekends



SCOTT CENTER ANNEX

BLDG. 343

396-7442

NSAHR HOSPITAL ANNEX

BLDG. 276

953-5855

