



Sea Air Space 2018

9 April 2018

RADM John P. Neagley
PEO Unmanned & Small Combatants

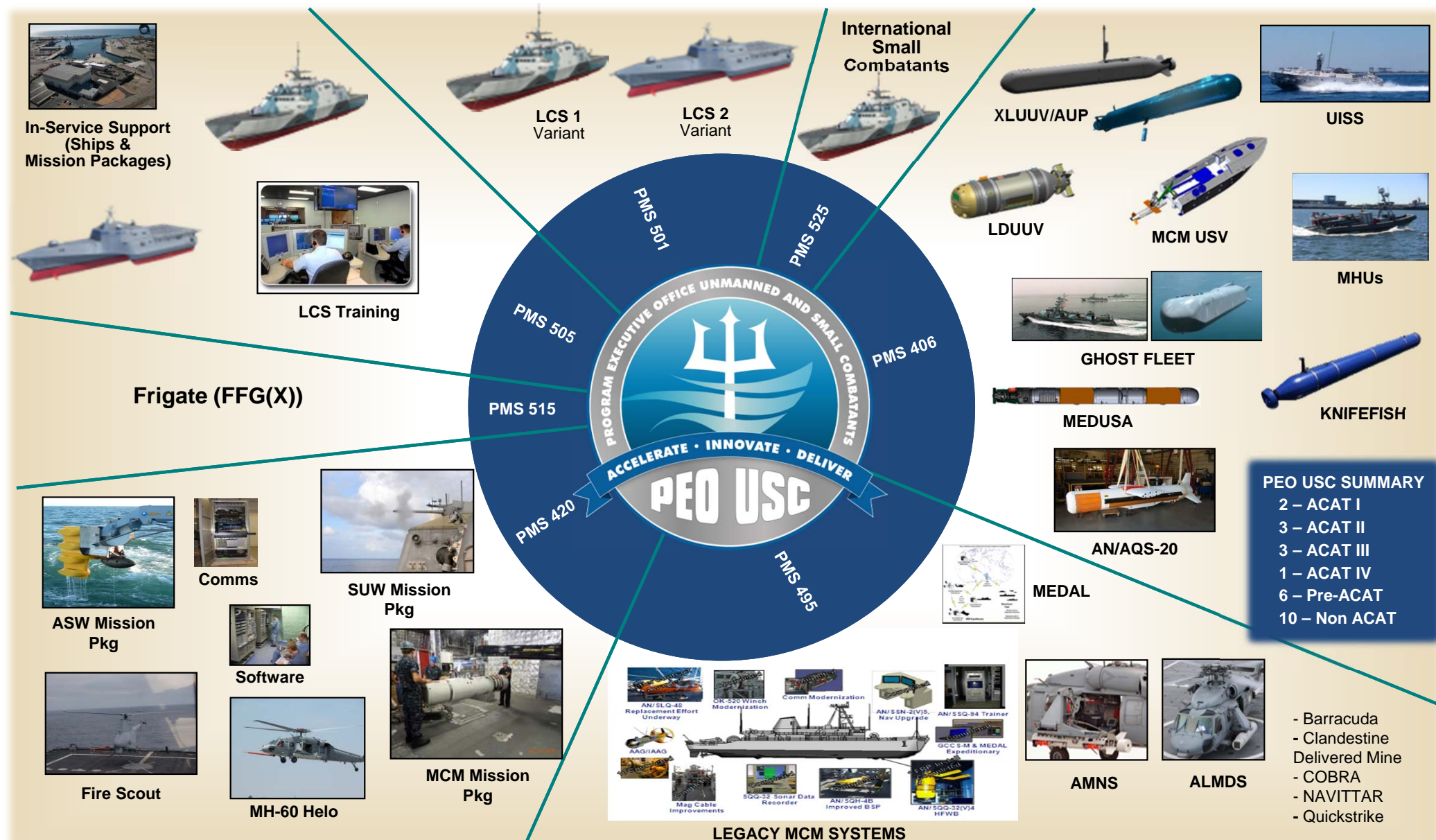


Transition to PEO USC





PEO USC Portfolio





Frigate (PMS 515)

Dr. Regan Campbell, Program Manager

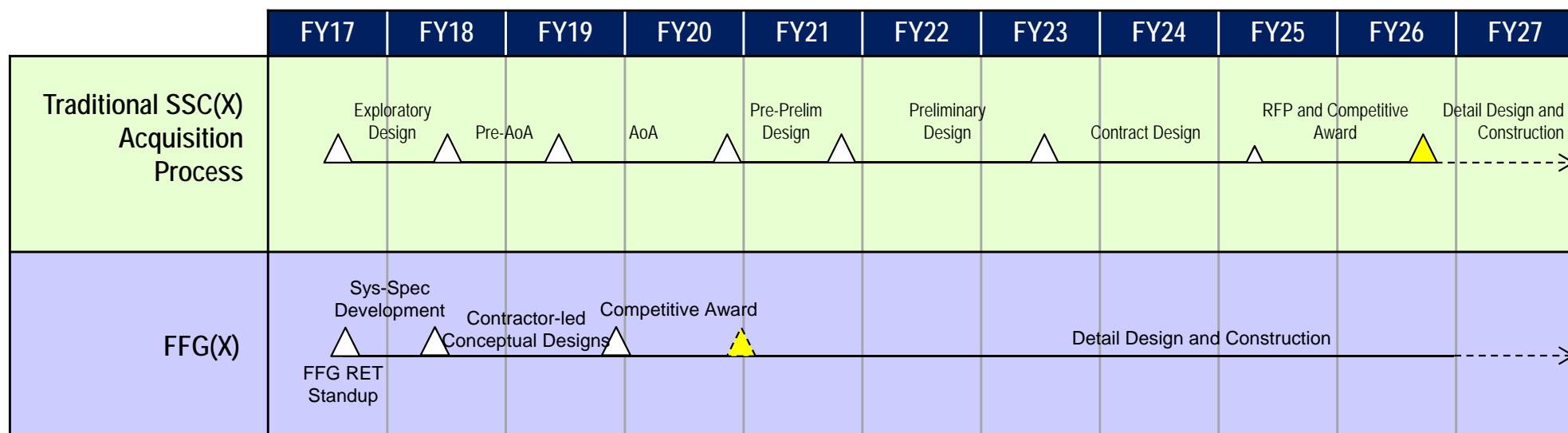




Accelerate and Innovate – FFG(X)

6 Year Acceleration of Affordable Contract Award enabled by:

- Parallel vice serial requirements evaluation process
- Industry engagement
- Clear shipbuilder requirements
- Requirement for Parent designs
- Use of common and mature Government Furnished Equipment (GFE)





Littoral Combat Ship (PMS 501)

CAPT Mike Taylor, USN





Ship Production/Post-Delivery Status

- PSA (PSA Start through OWLD):
 - 5 ships (LCS 5, 6, 7, 8, 10)
- PDT&T/CSSQT (CMA through PSA start):
 - 3 ships (LCS 9, 12, 14)
- Under Construction (Start Fab through CMA):
 - 14 ships (LCS 11, 13, 15 - 26)
- Pre-Construction (Award through Start Fab):
 - 3 ships (LCS 27, 28, 30)





Trials & Live Fire





Commissioning

LCS 12



LCS 9



LCS Mission Modules (PMS 420)

CAPT Ted Zobel, USN





LCS Mission Modules Program

- **Testing Completed in FY18:**

- Torpedo Defense Mission Module testing aboard a white ship at the Canadian Forces Maritime Experimental & Test Ranges (CFMETR)
- Coastal Mine Reconnaissance DT/OT testing on LCS 4



- **Testing Planned for FY18:**

- SSMM on LCS 5 transitioning to LCS 7 this summer to support IOC in early FY20





LCS Mission Modules Program



MH-60S helicopter w/ AMNS mission during
TECHEVAL



AMNS / ALMDS



30 mm Gun



Contractor Testing of the EMM PPTA to test end-to-end
L&R and tow operations prior to contract award



MFTA



Maritime Security



Knifefish



UISS/MCM USV Contractor Testing

MCM detachment
unloading AN/AQS-
20 sonar during
TECHEVAL





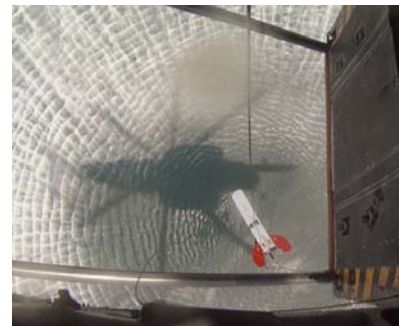
Mine Warfare (PMS 495)

CAPT Danielle George, USN



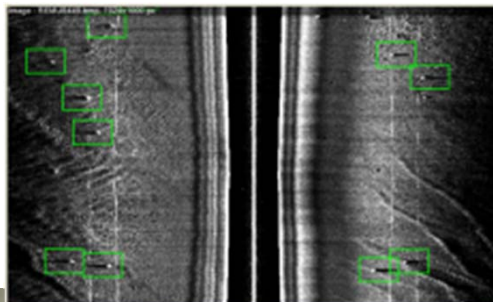
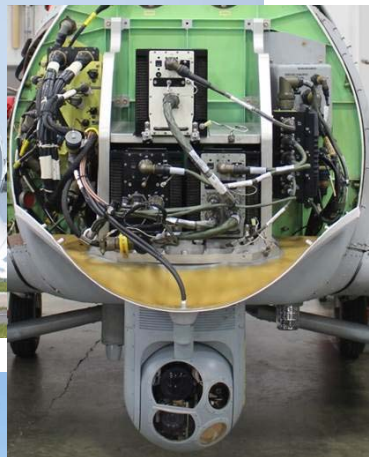


Mine Warfare - Current





Mine Warfare - Future





Unmanned Maritime Systems (PMS 406)

CAPT Jon Rucker, USN

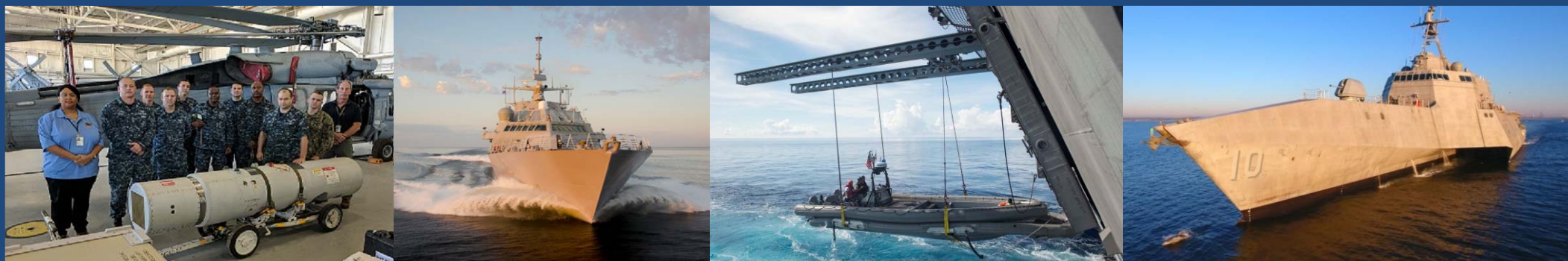




Accelerate



Innovate



Deliver