



**PMS 385**  
**Strategic and Theater Sealift**  
**Program Office**

**Sea – Air – Space Exposition**  
**April 3 – 5, 2017**

**CAPT Henry W. Stevens III, USN**



# Delivering Ships



## Expeditionary Fast

### Transport - EPF

(formerly JHSV)

<u>Ship Name</u>	<u>Delivery Date</u>
------------------	----------------------

EPF 1	
USNS SPEARHEAD	5 Dec 12

EPF 2	
USNS CHOCTAW COUNTY	6 Jun 13

EPF 3	
USNS MILLNOCKET	21 Mar 14

EPF 4	
USNS FALL RIVER	15 Sep 14

EPF 5	
USNS TRENTON	13 Apr 15

EPF 6	
USNS BRUNSWICK	14 Jan 16

EPF 7	
USNS CARSON CITY	24 Jun 16

EPF 8	
USNS YUMA	(pending) 12 Apr 17



## Expeditionary Transfer

### Dock - ESD

(formerly MLP)

<u>Ship Name</u>	<u>Delivery Date</u>
------------------	----------------------

ESD 1	
USNS MONTFORD POINT	14 May 13

ESD 2	
USNS JOHN GLENN	12 Mar 14

## Expeditionary Sea

### Base - ESB

(formerly MLP AFSB)

<u>Ship Name</u>	<u>Delivery Date</u>
------------------	----------------------

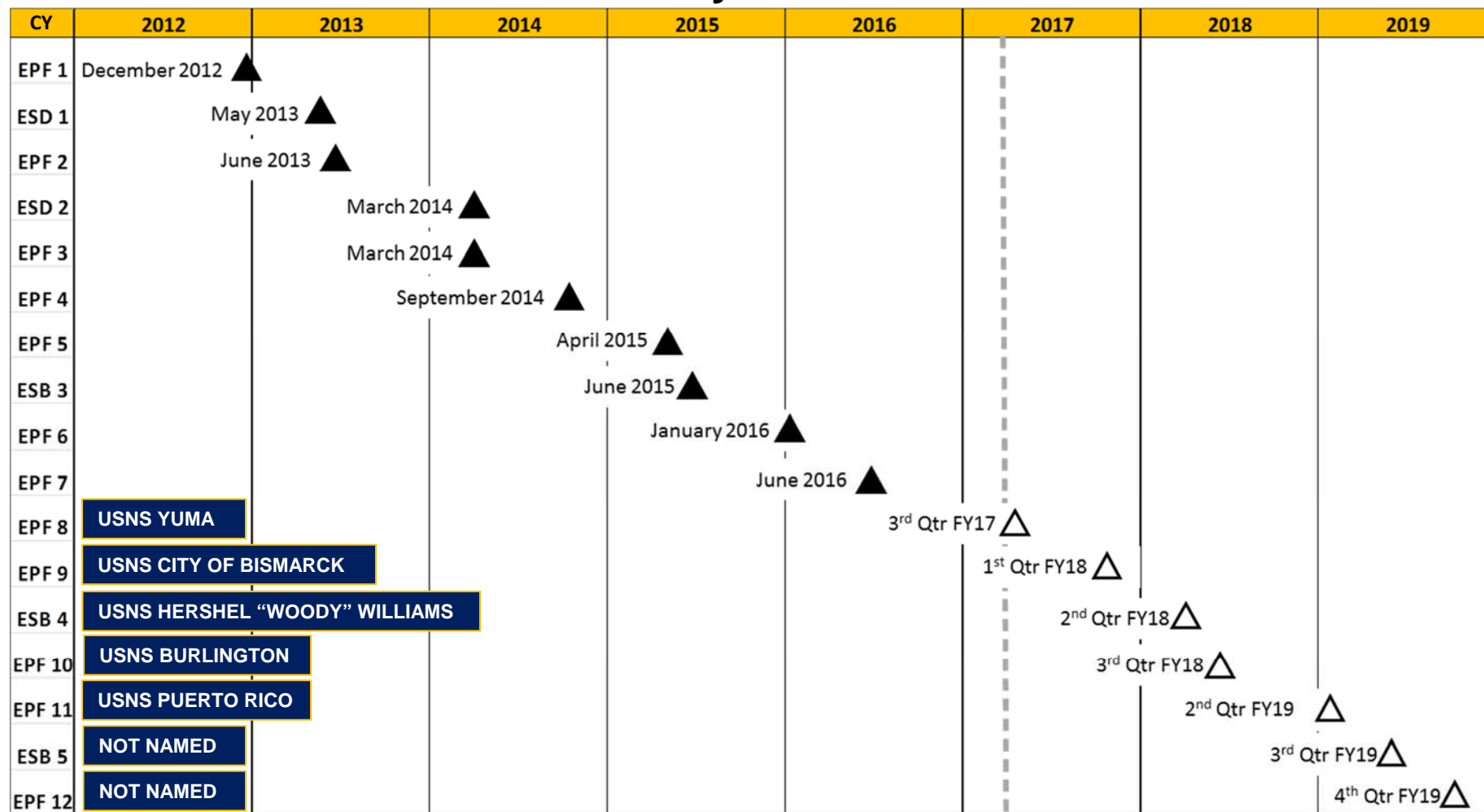
ESB 3	
USNS LEWIS B. PULLER	12 Jun 15



# It's All About Ships

PMS 385 has delivered 10 Battle Force ships in less than 4 years

## Delivery Schedule





# USNS LEWIS B. PULLER (T – ESB 3) Getting Ready for Fleet Tasking



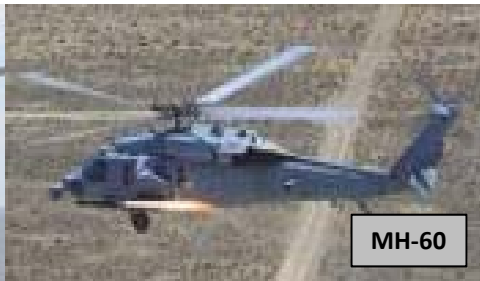




# ESB SOF Backfit Capabilities



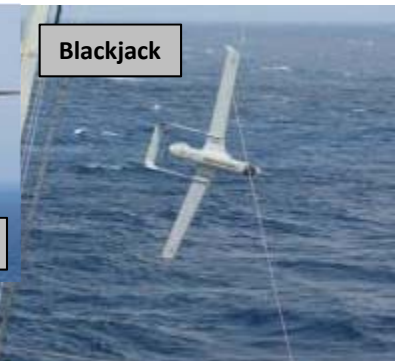
CH-47



MH-60



CH-22



Blackjack



AH-6



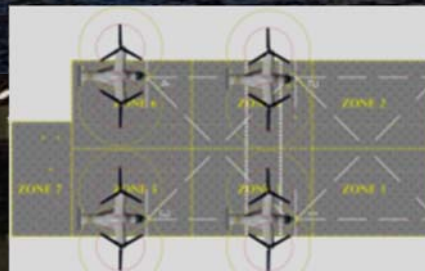
MOGAS



Fire Scout  
(Future)



TEU Slots/Services



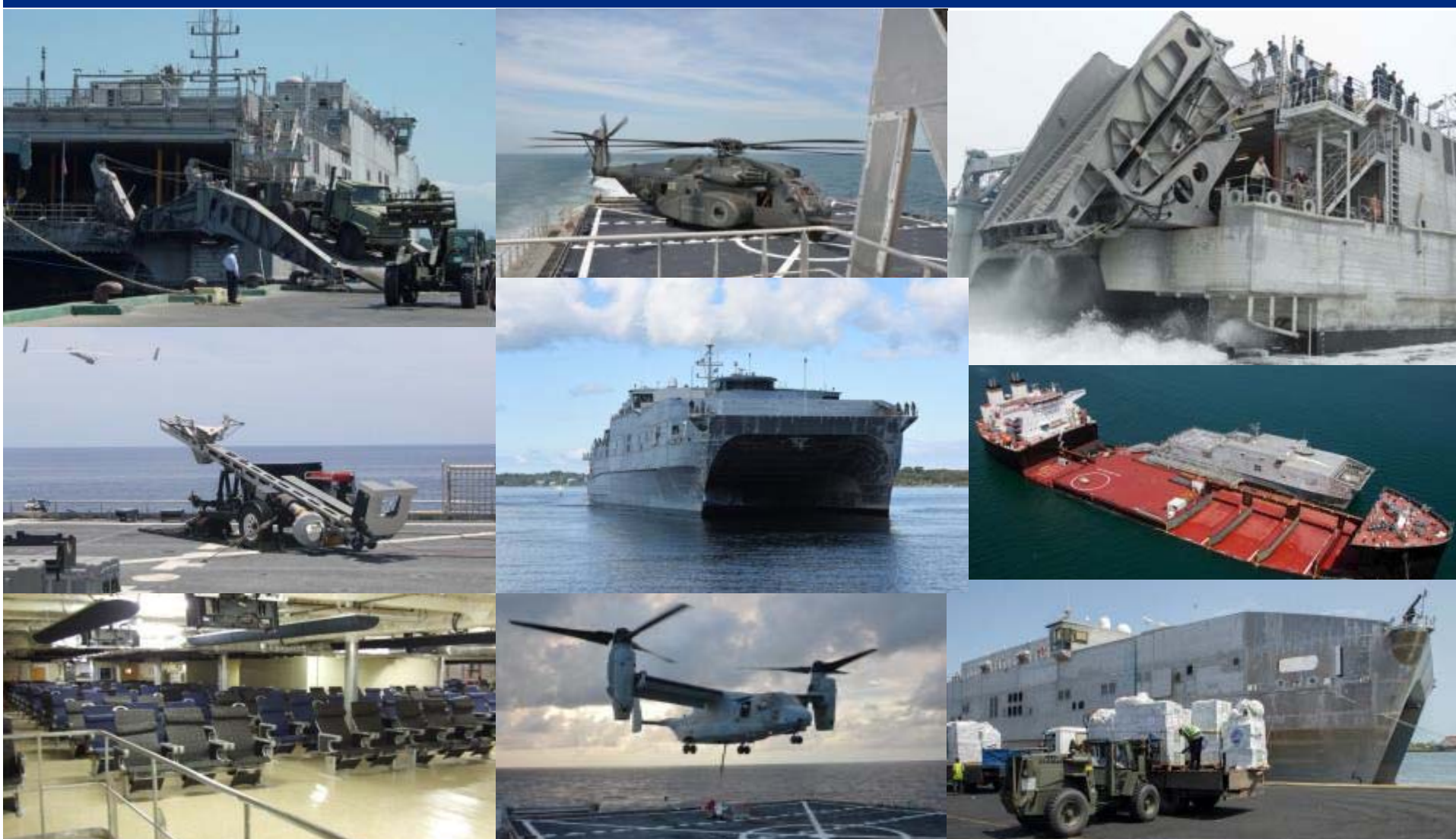
4 - Level 1/Class 2 Aviation Operating Spots



Increased Bandwidth



# Expeditionary Fast Transport – EPF in the Fleet



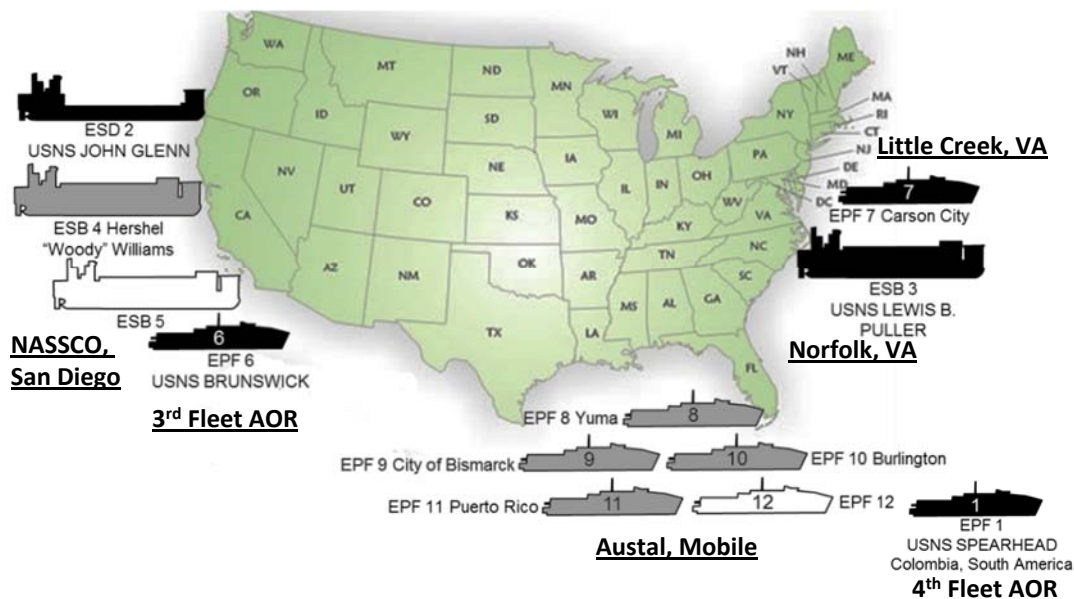
EPF 1-7 in service; 8 pending delivery April 2017; 9-12 deliveries planned every 6 months (EPF 11/12 awarded Sept 2016)

**DISTRIBUTION STATEMENT A: Approved for Public Release; Distribution is Unlimited**





# PMS 385 Ships Around the World



- Delivered
- Under Construction
- Under Contract

## Navy Exercising Flexibility in Support of Additional Missions:

- Intelligence, Surveillance and Reconnaissance
- Humanitarian Assistance/Disaster Relief
- Theater Security Cooperation
- SOF Support
- Counter-Piracy Operations
- Mine Countermeasure Ops
- Counter- Illicit Trafficking

... and more